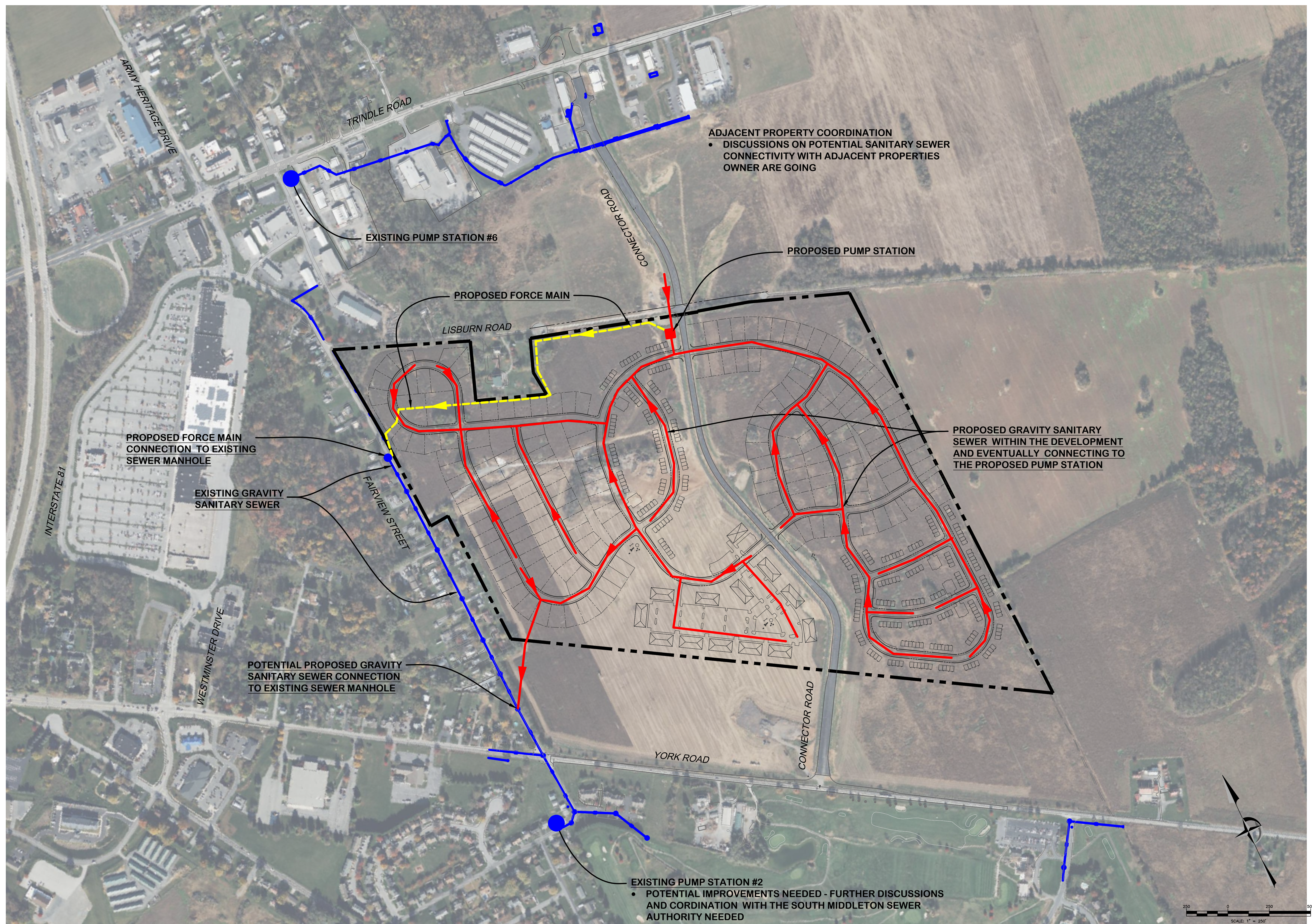


D:\2025\JOBS\2500587-00\LD\CONDITIONAL USE - 2023\2500587-LD-CU-LY03
 June/19/2023 3:55 PM



ADJACENT PROPERTY COORDINATION
 • DISCUSSIONS ON POTENTIAL SANITARY SEWER CONNECTIVITY WITH ADJACENT PROPERTIES OWNER ARE GOING

PROPOSED FORCE MAIN CONNECTION TO EXISTING SEWER MANHOLE

EXISTING GRAVITY SANITARY SEWER

POTENTIAL PROPOSED GRAVITY SANITARY SEWER CONNECTION TO EXISTING SEWER MANHOLE

EXISTING PUMP STATION #2
 • POTENTIAL IMPROVEMENTS NEEDED - FURTHER DISCUSSIONS AND CORDINATION WITH THE SOUTH MIDDLETON SEWER AUTHORITY NEEDED

PROPOSED GRAVITY SANITARY SEWER WITHIN THE DEVELOPMENT AND EVENTUALLY CONNECTING TO THE PROPOSED PUMP STATION

PROPOSED PUMP STATION

EXISTING PUMP STATION #6

NO.	DATE	REVISIONS DESCRIPTION	CHECKED/DRAWN

CONDITIONAL USE FOR
HERITAGE VILLAGE
 SOUTH MIDDLETON TOWNSHIP
 CUMBERLAND COUNTY
 PENNSYLVANIA

DRAWING TITLE
 CONCEPTUAL SEWER LAYOUT EXHIBIT

DATE MARCH 31, 2023
 JOB NO. 2200587
 FILE NAME LD-CU-LY01
 DRAWN BY TKM / ZM
 CHECKED BY CZ
 SHEET NO.